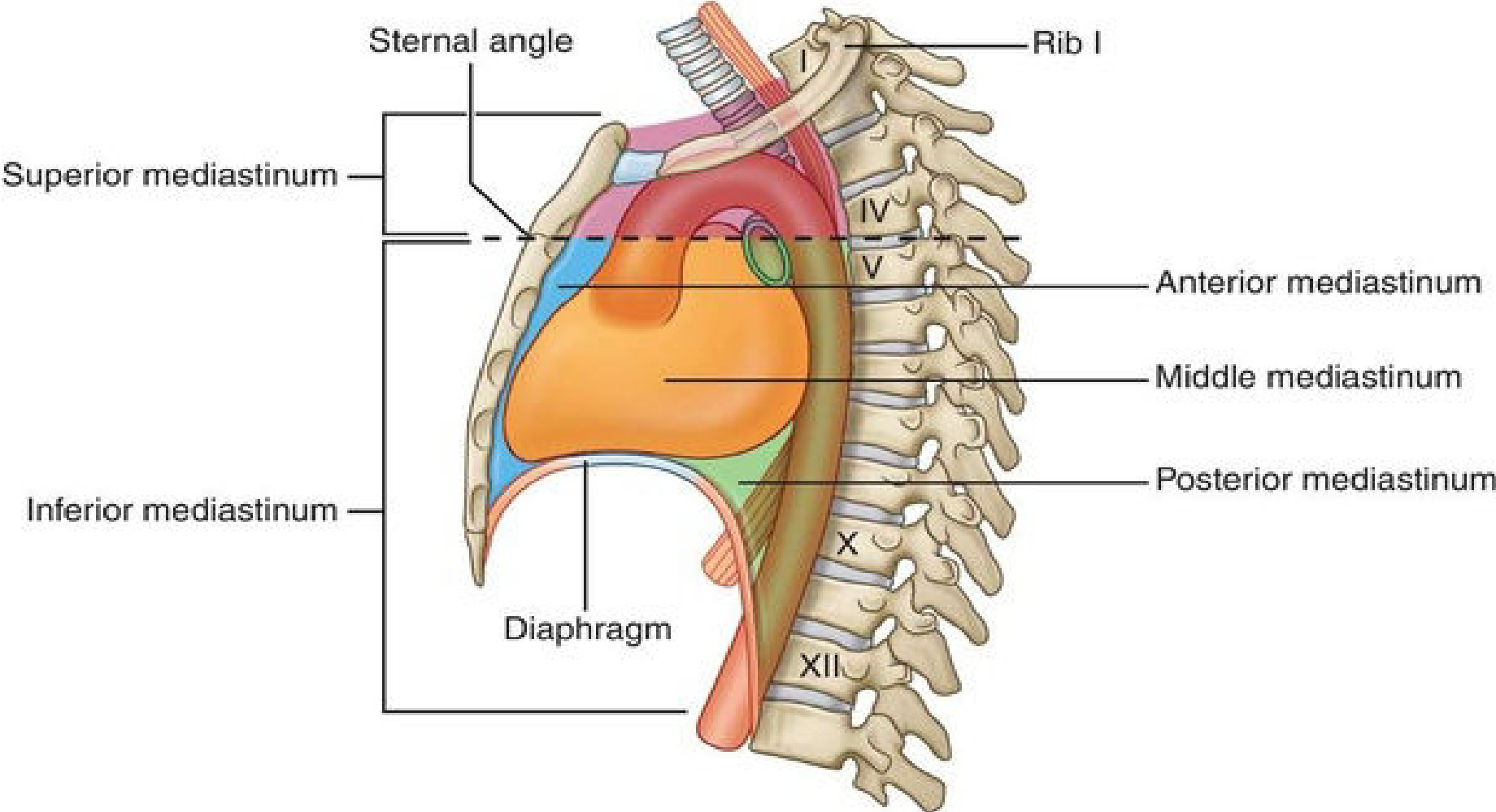




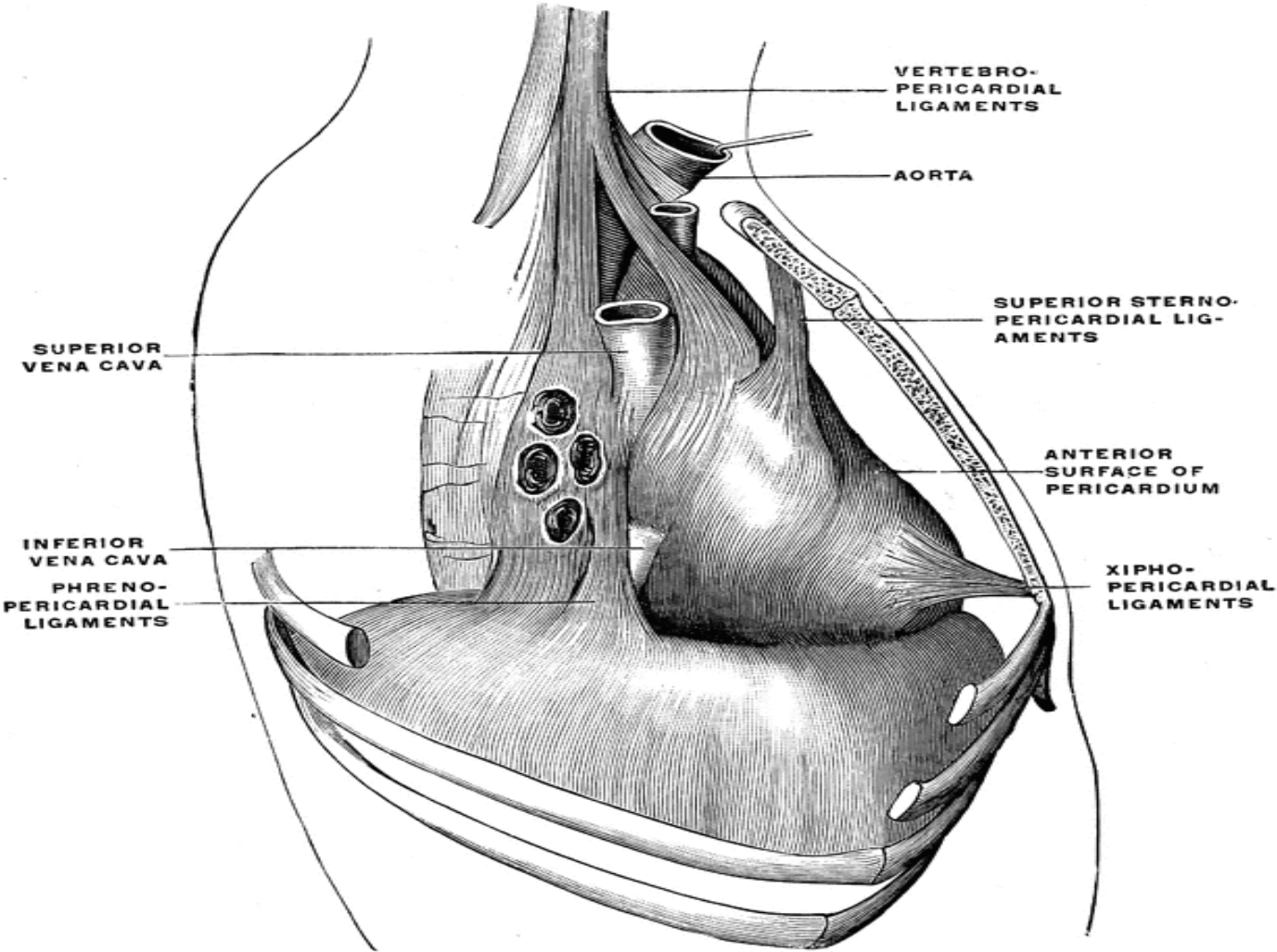
# per i c a r d i u m

Anatomy department  
Beni-suef university

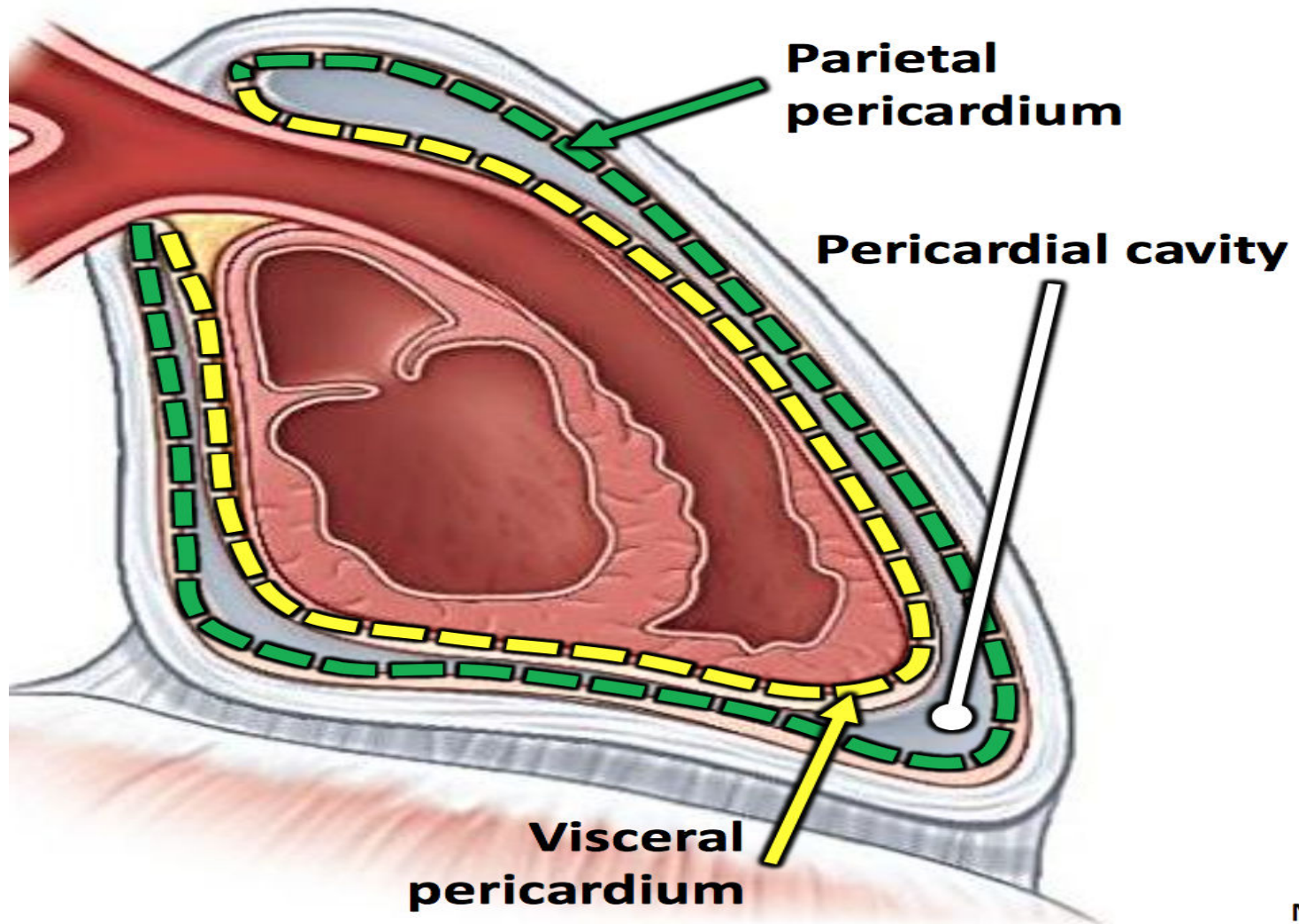
Location:



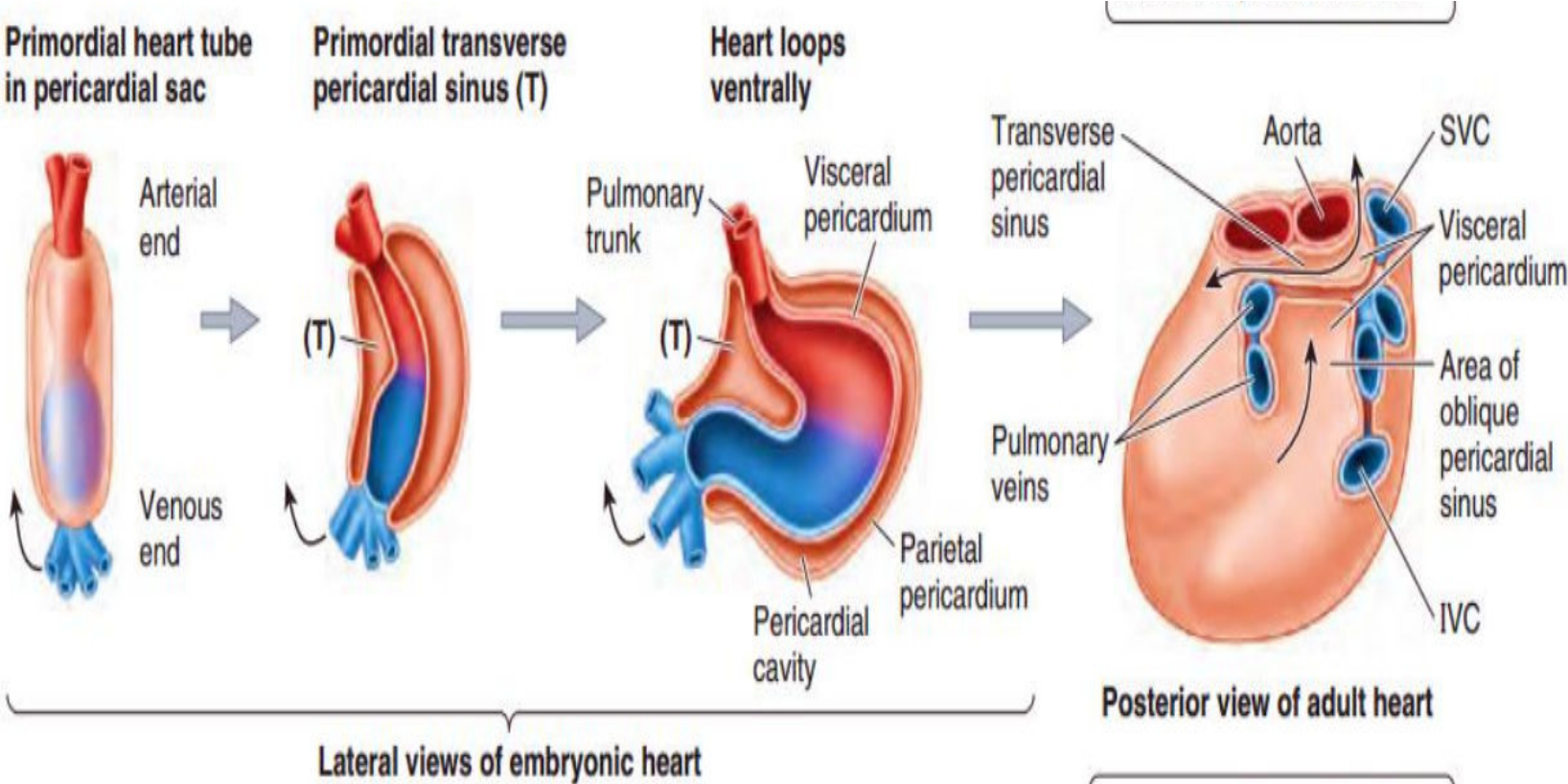
Fixation:



Parts:

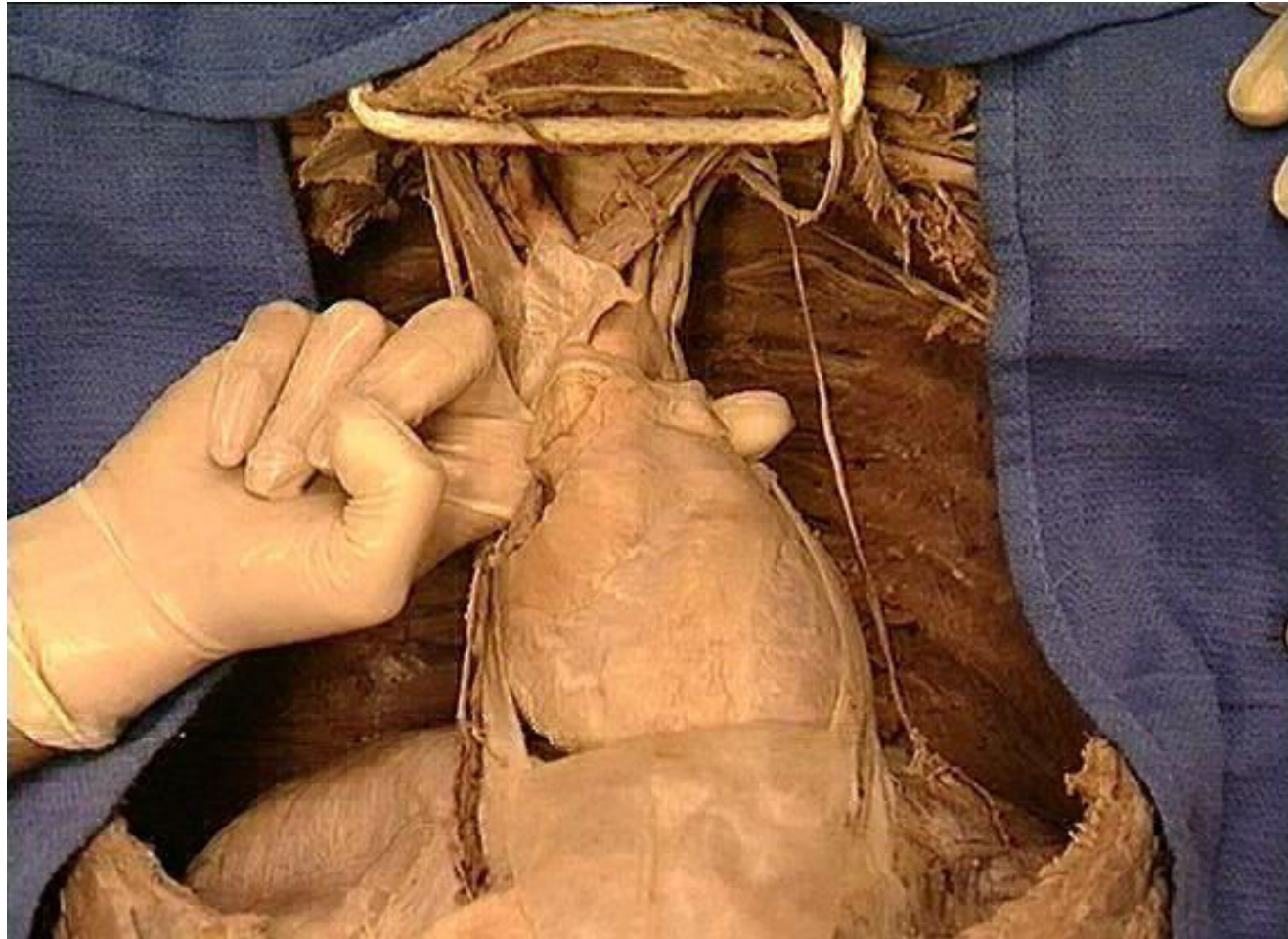


# Heart tube:

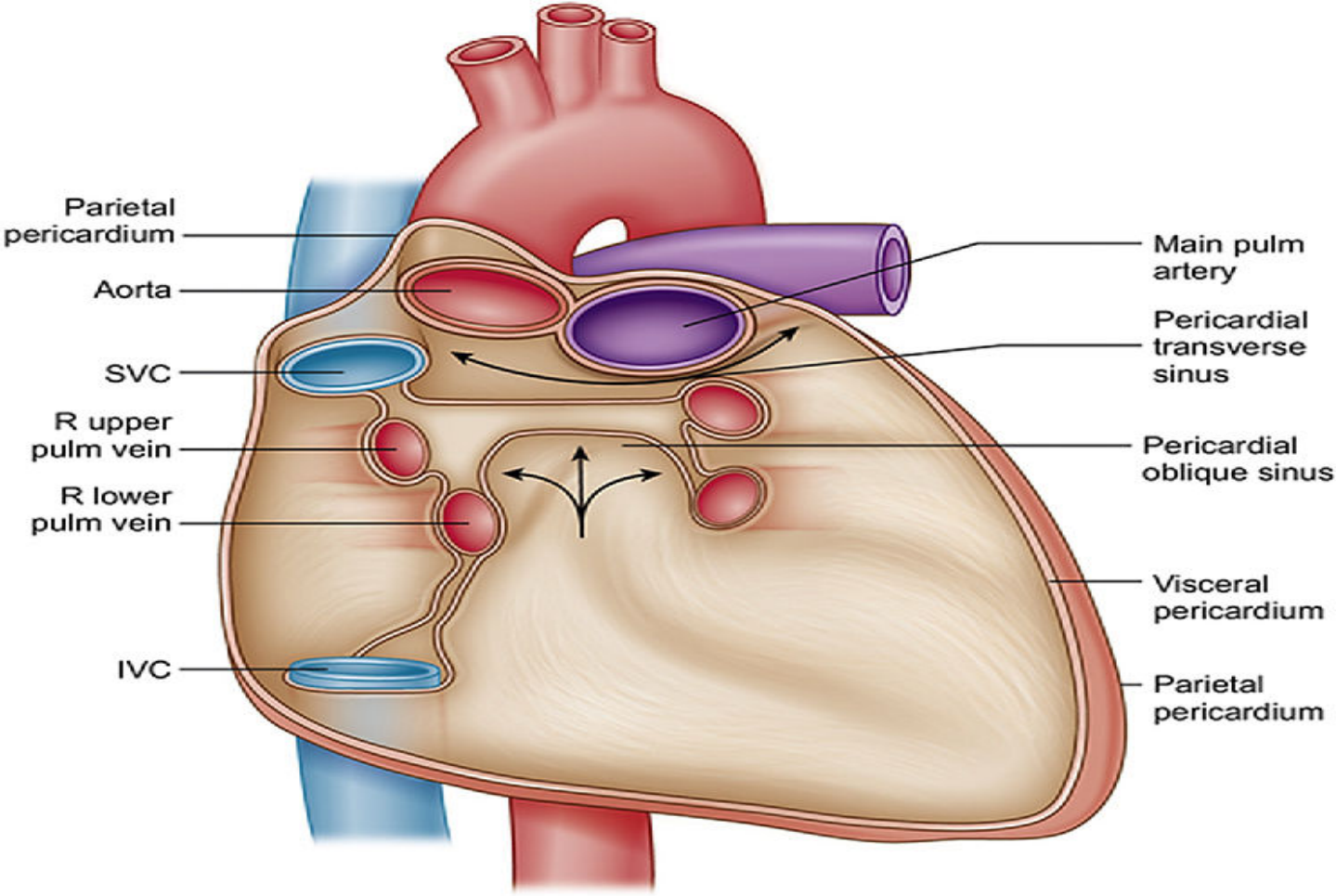




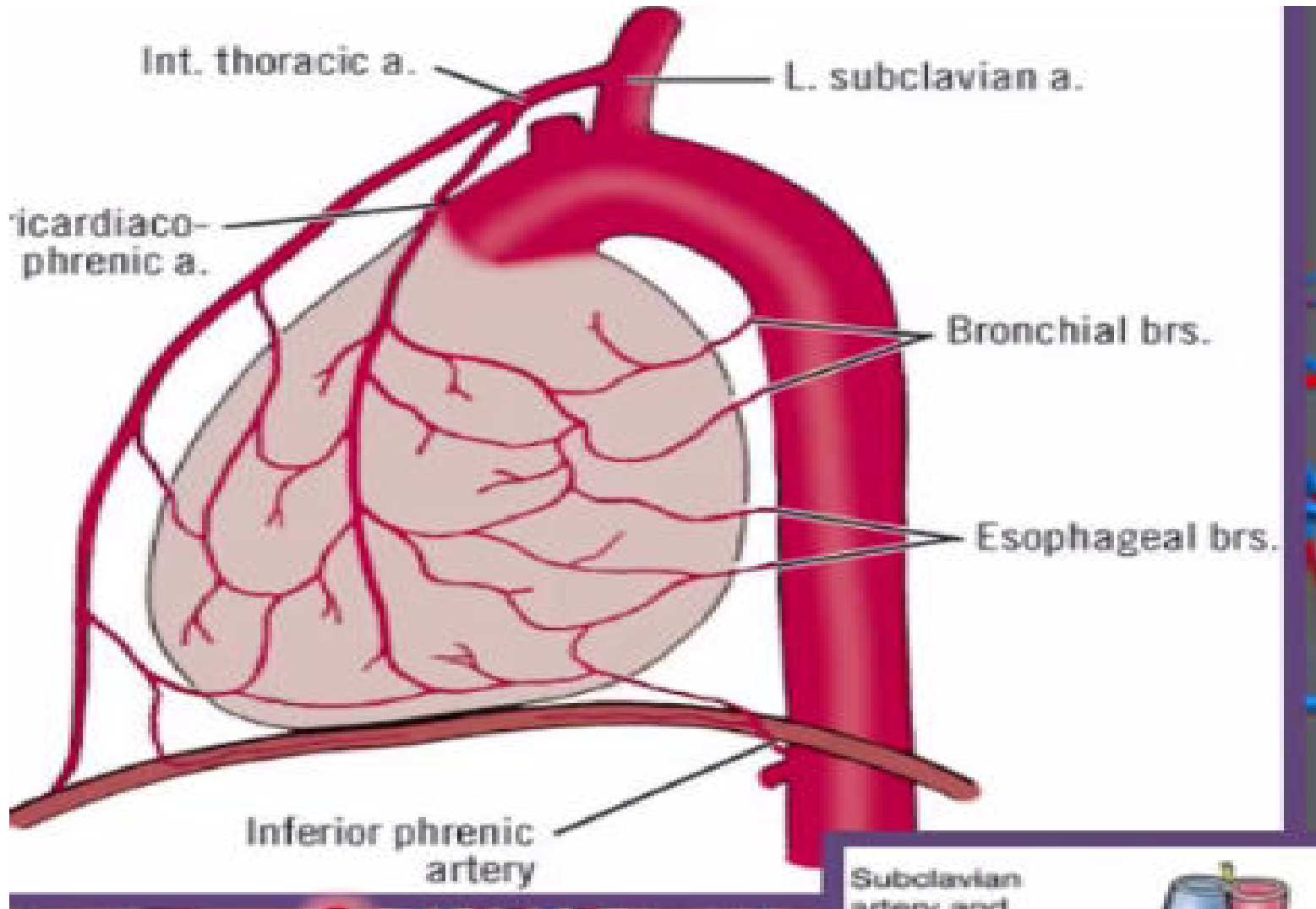
Transverse sinus:



# Oblique sinus:



# Blood supply:





## MCQ

**1- Regarding to blood supply of pericardium. Which of the following is correct:**

- A- only by esophageal branches
- B- only by internal thoracic branches
- C- by pericardico-phrenic artery
- D- by coronary arteries
- E- by pulmonary arteries

**2- Regarding to location of pericardium. Which of the following is correct:**

- A- sited in the superior mediastinum
- B- related posterior to trachea
- C- shifted more to the right side
- D- related inferior to stomach
- E- attached above to sterno-pericardial ligament

**3- Regarding to parts of pericardium. Which of the following is correct:**

- A- outer layer formed of serous pericardium
- B- inner layer formed of partial layer
- C- the pericardial cavity lies between fibrous and partial layers
- D- the pericardial cavity lies between visceral and partial layers
- E- the partial layer is closed adherent to epicardium

Key answer: 1- c , 2- d , 3- d



Download from  
Download.com



Copyright  
© 2004 Microsoft Corporation

Thank you